

DEDICATED TRANSPORTATION SOLUTIONS

Your Fleet. Your Rules. Ryder's Support.



Meet the Ryder Dedicated Team

For over 90 years, Ryder has been helping customers throughout North America by delivering the flexible, customized solutions needed to keep freight – and business – moving. We know owning and managing a fleet today is more expensive – and time-consuming – than ever. That’s why our team customizes a strategic solution for you, with just the right mix of trucks, drivers, fleet maintenance, routing, scheduling, management, and administrative support. This provides the benefits of an expertly managed fleet, while maintaining control.

STEVE SENSING

President, Global SCS

STEVE MARTIN

Senior Vice President, DTS

TODD SKILES

Senior Vice President, Sales

AL PINTO

Vice President, DTS Operations

SCOTT TEAL

Vice President, DTS Operations

KEVIN ASKEW

Vice President, DTS Operations

RYAN MARTIN

Vice President, DTS Operations

JIMMY MEADOWS

Vice President, DTS Sales

ROGER WELLING

Group Director Sales, DTS

JONATHAN CROWTHER

Group Director Sales, DTS

“We take our experience and leverage it to create an advantage for companies to drive value in their supply chains. We approach every relationship with the spirit of continuous improvement using LEAN practices. We take the trust we have developed with our clients and embark on a journey that continually optimizes their network, driving more value for our partners.”

– Steve Sensing, President Global SCS

Why Ryder Dedicated?

As a fully diversified transportation and supply chain solutions company, Ryder offers customers the ability to fully integrate their operations to allow end-to-end visibility, increased efficiency, and a lower cost to operate.

Ryder Dedicated Transportation Solutions offer a unique solution for your business, built on best in class engineering, driver excellence, operational expertise, and fleet management to help you overcome challenges in today's transportation industry.

Through our work with customers in more than 17 different industries such as building & construction, metals, lumber, industrial, technology, healthcare, consumer packaged

goods, oil & gas, and dairy, to name a few, we are able to use best practices to develop a solution that fits your business's specific needs. Ryder ensures that you get guaranteed capacity, are not at the mercy of the driver shortage, have a flexible network, mitigate risk, and maximize your efficiency. And, with our expertly developed TCO tool, we can provide you with clarity on the full range of expenses related to running your fleet privately or through a dedicated transportation solution, free of charge.

In turn, you get a flexible, safe, and compliant fleet with trained drivers that keep your products moving, your business competitive, and your customers satisfied.

How Ryder Dedicated Transportation Works for You

Industry challenges such as the driver shortage, capacity constraints, increased freight rates, stringent regulations, and network visibility make investing in your fleet expensive and time-consuming. With Ryder Dedicated Transportation Solutions, we help you overcome these challenges through:



DRIVER WELFARE

We recruit, hire and ensure your fleet and drivers feel valued and well-treated to maintain high retention rates and driver satisfaction



PERSONALIZED SERVICE

Our expert dedicated account representative will develop a strong understanding of your business and ensure your specific needs are met



ENGINEERING

Enhance service, optimize inventory, and improve operating margins



PREDICTABLE COSTS

Save with one predictable monthly cost versus multiple invoices from multiple vendors



ON-TIME DELIVERY

Improve performance with a reliable fleet and drivers



UPTIME

Reduce breakdowns and mechanical issues that keep your fleet idle



LIABILITY AND REGULATION

Ryder assumes all your risk from accidents, breakdowns, or unforeseen driver issues, and ensures your fleet and drivers are compliant with all regulations



RIGHT-SIZE FLEET

Business intelligence and analytics provides you a fleet fit to your needs

Dedicated Fleet Management

We work with you to manage your transportation network, giving you more control of your business. Through IT engineering we assess your current network to right-size your fleet and save you money on idle assets. You also gain the flexibility to ramp up your fleet during peak periods and scale back down during normal season. Through routing and scheduling, you'll save money on fuel costs, empty miles, and ensure your goods are getting to their destination when expected.

By working with you to manage your transportation network, you gain the ability to:

- Focus more on your core business while improving on-time delivery
- Reduce operating costs
- Have a fleet and drivers that are responsive to your business
- Upgrade your fleet

Integrated Transportation Network

We manage over \$11 million in freight annually and have a portfolio of over 85,000 carriers across the country. Whether you have a fleet, use for-hire carriers, or both, finding the best combination of use at the lowest cost to operate gives you an optimized network. This allows you to have flexibility to adapt to your company's strategy, changing needs, and a variety of constraints and variables.

Taking all variables into account Ryder Dedicated Transportation Solutions create:

- Flexibility to manage demand
- Cost savings with strategic network adjustments
- Transparency through innovative technology
- Increased efficiency thanks to route optimization
- Collaboration to optimize your transportation network

Drivers – The face of our business and yours

The American Trucking Association forecasts a new record high truck driver shortage of 82,000 in 2024, and by the year 2030, it's expected to grow to 160,000. The shortfall amounts to a significant gap between demand and supply. And the number of new drivers being added to the workforce annually is not nearly enough to keep up with the rising demand.

With Ryder Dedicated, we hire, train, and manage drivers specifically for your business, and we can hire your current drivers. We are an employer of choice for drivers, which is shown by our robust network of more than 10,200 dedicated drivers. Our driver turnover rate is three times less than the industry average, thanks to best-in-class recruitment, training, and retention programs. Ryder Dedicated allows you to rest easy, knowing you'll have the professional drivers and available vehicles you need, when you need them.

“Customers trust Ryder to transport their freight safely and on time. And, Ryder provides us with the best equipment, training, and support to ensure we execute for our customers. Ryder always puts safety first, and understands that my family is as important as my career.”

– Willie Anderson, Ryder Driver





Safety and Compliance

At Ryder, safety comes first. As the industry leader in safety and compliance, we are well-known for our exemplary driver training, safety webinars, compliance services, and safety products. That's why we were the first logistics company to be awarded the National Safety Council's Green Cross for Safety medal.

Ryder's Safety and Compliance Services:

- RyderDrive™, our mobile application for drivers that delivers digitized trip management while simplifying administrative tasks
- Help drivers navigate daily challenges safely
- Provide affordable, accessible safety management training online
- Improve compliance with safety programs, mock audits, and electronic logs
- Avg. 1.86 million miles traveled without incident
- In-cab technology and incident management

Crashes can be disastrous in so many ways. Regulatory violations can cost thousands of dollars.

So do what you can:

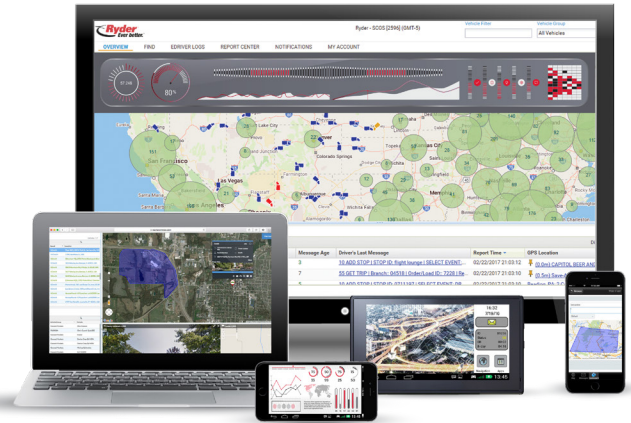
Reduce your risk with Ryder.

Business Intelligence

With Ryder's business intelligence capabilities, you benefit from applications, infrastructure, tools, and best practices that enable us to optimize your data and performance. Our on-site Customer Logistics Manager at your location leads a four-step approach – descriptive, diagnostic, predictive, and prescriptive – that transforms big data into business intelligence to your specific location level. The result of this intelligence is the backbone for continuously improving your transportation from asset utilization to optimal lane rates and routes.

At Ryder, technology is at the heart of so much that we do for you. From optimizing routes and enhancing safety to our innovative technology, you receive actionable business intelligence to help your network run smoother.

Through engineering, Ryder Dedicated Transportation Solutions deliver a customized plan to capture and analyze data that tracks your freight, mileage, location, on-time performance, fuel efficiency, and more ensuring an optimized network at the lowest total cost.



RYDERSHARE™

RyderShare™, our innovative technology tool, gives you real-time visibility of your goods on trucks and inside warehouses, along with the ability to manage issues by exception, from a single source.

RyderShare™ provides the ultimate digital platform for visibility across your supply chain, enhancing customer service by sending notifications and facilitating self-service options. This empowers employees to increase value per hour with high-importance engagement.

CENTRALIZED SOURCE FOR YOUR ENTIRE SUPPLY CHAIN

RyderShare™ provides a single, accurate resource enabling proactive management and a centralized view of your entire supply chain.

CUSTOM DASHBOARDS AND SEAMLESS INTEGRATION

Leverage connectivity across services and modes to prevent unplanned disruptions. Create customized dashboards for tailored experiences and focused views for suppliers and customers, accelerating processes, shortening lead times, and ensuring everyone has access to the same real-time information. RyderShare™ integrates seamlessly with existing ERP and customer-facing tools, connecting technologies.

OPTIMIZED OPERATIONS

Optimize operations by sharing real-time updates across your entire network. RyderShare™ creates a single source of accessible data for suppliers, warehouses, and customers, enhancing overall efficiency and effectiveness.



Key Benefits



PRODUCTIVITY

Increased productivity up to 50%



LABOR EFFICIENCY

Labor efficiency savings up to 50%



ON-TIME PERFORMANCE

Improved on-time performance of 99%



ORGANIZATIONAL REACTION

Improved organizational reaction time by 90%

Engineering

Today's market is pressuring companies in several ways. You may be forced to decrease overall supply chain costs. You could be looking for ways to reduce your carbon footprint. Or, you may simply wonder if there's a better way to use transportation to support business objectives.

Ryder Dedicated provides transportation network engineering services that address those needs, and resolve them.

Our design process combines customer ship-level detail, customer business rules and industry expertise with best-in-class decision-support tools to provide you with the optimal transportation plan.

From defining the scope of the issue to implementing the solution, Ryder Dedicated works with you to drive success.



The Technology we Utilize

JDA Optimization:

- Optimal facility location and count
- Inventory deployment assignments
- Aggregate transport costs and service levels
- AI assisted route planning
- Tariff management and transport ration
- Predictive transportation modeling

Llamasoft (IBM LogicNet):

- Integrated supply chain optimization
- Facility location and count
- Transport design and modal selection
- Inventory planning and simulation
- Landed cost

JDA Transportation Modeler:

- Optimal mode selection
- Multi-stop truckload and continuous move
- Optimal cost and service selection

ILPS (Ryder proprietary):

- Dedicated fleet design
- Fleet planning
- Driver and equipment utilization
- Center of gravity

TMW Systems Appian:

- Dedicated fleet design
- Street-level routing
- Driver and equipment utilization
- Fleet rationalization

Ryder Dedicated Transportation Solutions by the Numbers

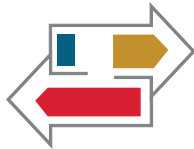
Get the benefits of a private fleet without the hassles of managing one



10,200+
DRIVERS



LOWERED COST
THROUGH
ADMINISTRATIVE
SUPPORT



150+
LOGISTICS
ENGINEERS



400+
DEDICATED FLEETS



1
IN SAFETY ACROSS
NORTH AMERICA



99%
ON-TIME
DELIVERY



ROUTE
PLANNING



9,900+
DEDICATED
VEHICLES



UP TO
25%
IN NETWORK
SAVINGS

Ryder System, Inc.

Businesses trust Ryder because we have the experience, expertise, and resources to manage their most critical fleet, transportation, and supply chain functions better than they can on their own. We are the only fully integrated transportation and supply chain logistics provider in the industry. Regardless of the size of your company or what industry you serve, Ryder has a solution to help you with your most complex transportation or logistics challenges.

We are the only provider that offers a unique portfolio of solutions in fleet management, dedicated transportation, and supply chain management. Through these solutions, we touch peoples' lives in ways they probably don't realize – the coffee they drank this morning, the cereal they ate for breakfast, the car they drove, the computer they use at home or in the office, and the products they picked up at the drug store on the way home.

With our combination of know-how, processes, engineering, and infrastructure, we help customers mitigate supply chain disruptions related to everything from natural disasters, to roadway and port congestion, to parts availability and vendor production issues. Ryder enables companies to outsource many of these challenges to a partner with the experience, resources, and expertise to drive effective solutions while increasing business speed, reliability, and efficiency.

Discover how you can be *Ever better™* at [ryder.com](https://www.ryder.com)





[ryder.com](https://www.ryder.com)

Ryder and the Ryder logo are registered trademarks of Ryder System, Inc.
Copyright © 2024 Ryder System, Inc. Ever better is a trademark of Ryder System, Inc.
PT604125 071924